



# Inter-school Regatta 2021

**Saturday 1st May & Sunday 2nd May**

Incorporating the Starling Northland Champs and Trailer Series  
29er Northland Champs

Waitangi, Bay of Islands.

The Organising Authority is  
The Bay of Islands Yacht Club

---

## SAILING INSTRUCTIONS

---

### 1. RULES

- 1.1. The regatta will be governed by the rules as defined in *The Racing Rules of Sailing*.
- 1.2. Rule Appendix P, Special Procedures for Rule 42, will apply as amended in Sailing Instruction 16. Refer 10.1.3.1
- 1.3. Optimist class rule Appendix G3, *Chartered or Loaned Boats*, will apply.
- 1.4. All Class rules shall apply except RS Feva may use Club Sails Dacron.
- 1.5. Appendix T will apply
- 1.6. Competitors shall comply with any reasonable request from a regatta official.

### 2. NOTICES TO COMPETITORS

- 2.1. Notices to competitors will be posted on the official notice board located on the white cupboards in the club room.

### 3. CHANGES TO SAILING INSTRUCTIONS

- 
- 3.1. Any change to the Sailing Instructions will be posted before 0830 hours on the day it will take effect, except that any change to the schedule of races will be posted by 1900

### 4. SIGNALS MADE ASHORE

- 
- 4.1. Signals made ashore will be displayed on the flag pole adjacent to the Bay of Islands YC rooms.

- 4.2. A boat shall not go afloat until flag D is displayed ashore. The warning signal will not be made before the scheduled time or less than 20 minutes after flag D is displayed.



---

### 5. Inter-School Regatta

- 5.1. Sailors briefing Saturday 1st May at 0900 hours in the club house.
- 5.2. Patrol and Official Boats briefing Saturday 1st May at 0915 hours adjacent to the club house.
- 5.3 The age limit for inter-school points is under 19 as of December 31st 2020

## 6. SCHEDULE OF RACES - Targets

---

### 6.1. Interschool Regatta Course A

1st 2nd May 10:30  
Opti

Starling Green

Open Skiff Bronze

Green Fleets are to be launch after Course B boats  
Class Flags subject to change at the Briefing. Fleets may be merged

### 6.2. Course B

1st 2nd May 10:30  
29er

Class Flag 29er

1st 2nd May 10:35  
Laser - 420  
Class Flag Laser

Subject to Change at the Briefing  
Open Skiff Gold and Silver OW2  
Laser - 420 IW2  
Starling IW2  
29er L

1st 2nd May 10:40  
Starling  
Class Flag Starling

1st 2nd May 10:45  
Open Skiff - Gold and Silver

Class Flag Open Skiff

Target 4 Races each day

Class Flags subject to change  
at the Briefing

Boats are to be launched at the Ramp STRICKLY in order and will be called by the Shore Manager  
Open Skiff - 420 - Laser - 29er - Starling - Opti/Bronze Open Skiff/Green Starling

- 6.3. The order of classes starting and the course configurations on Saturday and Sunday may be changed by the Race Officer and communicated during the Saturday 9am Briefing.
- 6.4. To alert boats that a race or sequence of races will begin soon, the orange starting line flag will be displayed with one sound at least five minutes before a warning signal is made.
- 6.5. The warning signal for a subsequent race on the same day will be made as soon as practicable but not sooner than 5 minutes after the last boat finishes the previous race for that fleet.
- 6.6. One extra race per day may be sailed provided the schedule does not become more than one race ahead. This decision is made on the water at the discretion of the Race Officer.
- 6.7. On Sunday 2nd May no warning signal will be made after 16:00.

## **7. THE COURSES**

---

- 7.1. The diagrams in Attachment A show the courses A, Attachment B Course B and the order in which marks are to be passed, and the side on which each mark is to be left  
Attachment D shows the area racing will occur.

## **8. THE START**

---

- 8.1. The starting line will be between staffs displaying orange flag on the starboard end mark and the course side of the port-end mark.
- 8.2. Boats whose warning signal has not been made shall avoid the starting area during the starting sequence for other races.
- 8.3. A boat starting later than four minutes after her starting signal will be scored Did Not Start. This changes rule A4, *Low Point System*, and A5, *Scores Determined by the Race Committee*.

## **CHANGE OF THE NEXT LEG OF THE COURSE**

- 8.4. To change the next leg of the course, the race committee will lay a new mark (or move the finishing line) and remove the original mark as soon as practical. When in a subsequent change a new mark is replaced, it will be replaced by an original mark.
- 8.5. Except at a gate, boats shall pass between the Race Committee boat signalling the change of next leg and the nearby mark, leaving the mark to port and the Race Committee boat to starboard. This changes rule 28, *Sailing the Course*.

## **9. THE FINISH**

---

- 9.1. The finishing line is shown on Attachment A and B
- 9.2. Boats that have finished shall return directly to the starting area or ashore, keeping well clear of all boats racing and of all boats whose warning signal has been made.

## TIME LIMITS AND TARGET TIMES

9.3. The time limits and target times in minutes for the first boat are as follows:

	Time Limit	Target Time
Optimist Open	50 minutes	35 minutes
Open Skiff	50 minutes	35 minutes
Starling	50 minutes	35 minutes
Laser	50 minutes	35 minutes
420	50 minutes	35 minutes
Feva	50 minutes	35 minutes
29er	50 minutes	35 minutes

- 9.4. If no boat has passed Mark 1 within the Mark 1 Time Limit, the race will be abandoned. Failure to meet the target time will not be grounds for redress. This changes rule 62.1(a), *Redress*.
- 9.5. Boats failing to finish within fifteen minutes after the first boat in its fleet sails the course and finishes will be scored Did Not Finish without a hearing. This changes rules 35, *Time Limit and Scores* and A4, *Low Point System* and A5, *Scores Determined by the Race Committee*.

The race committee may give a finishing place to any boat as follows, if the W flag is used to allow finishing “on the course”

- When a race committee boat displays flag W with two sounds, boats that have not yet finished may be given a finishing place anywhere on the race course, at a nearby mark or not.
- When a boat finishes in accordance with this instruction, she shall be awarded a finishing place matching per overall position in that race.

When the W flag is raised with two sounds all boats are to make their way to the start line for the next race unless racing has finished for the day.



## 10. PENALTY SYSTEM FOR BREACHES OF RULE 42

---

Appendix P, Special Procedures for Rule 42, will apply with the following changes:

### 10.1. For the Interschools Regatta

- 10.1.1. Rule P2.1, First Penalty, is amended to “When a boat is penalised under rule P1 her penalty shall be a Two-Turns Penalty under rule 44.2, One-Turn and Two-Turns Penalties. If she fails to take it she will be disqualified without a hearing. If a penalty is signalled after a boat has finished, the boat will be given a scoring penalty of 10% of her fleet size without a hearing although her score will not be worse than the score for a DSQ.” For RS Feva, Open Skiff and 29er's two turn penalties will be replaced with one turn penalty. Rule infringements on Course A will be one turn Penalty for Skiffs.
- 10.1.2. Rules P2.2, Second Penalty, and P2.3, Third and Subsequent Penalties, are deleted.
- 10.1.3. Rule P3, Third and Subsequent Penalties, is replaced with “If a boat has been penalised under Appendix P1 and the race committee signals a postponement, general recall or abandonment before the boat has had an opportunity to take a penalty the penalty is cancelled. If the boat has had an opportunity to take the penalty and does not it shall not compete in that race if it is restarted or resailed. For the purposes of this Sailing Instruction a race is ‘restarted or resailed’ when it has the same race number as a previously abandoned or recalled race, even if the race is resailed on a later date, or is resailed as part of a Final Series instead of a Qualifying Series. If she competes, she shall be disqualified (score not excludable) without a hearing and the Protest Committee will consider calling a hearing under rule 69.1(a). This changes rule 36, *Races Restarted or Resailed* .”
- 10.1.3.1.
- RRS P5 may apply to the Starling Fleet and Open Skiff Fleets according to their specific class rules. If the Race Committee considers the wind speed exceeds 10 kts they may display Flag O no later than the warning signal:- Pumping, ooching and rocking are permitted.  
If the windspeed falls below 10kts the Race Committee may display Flag R at a mark :-Pumping ooching rocking are no longer permitted.
- 10.1.4.
- Rule P4, Redress Limitation, is replaced with “An action by the Protest Committee or its designated observer under Appendix P1, Signalling a Penalty, shall not be grounds for a request for redress by a boat unless the action was improper due to a failure to take into account a race committee signal or a class rule. The Protest Committee may initiate a redress hearing and may give redress for an action by a member of the Protest Committee or its designated observer under rule P1”. This changes rule 60` .1(b), *Right to Protest; Right to Request Redress or Rule 69 Action* .

## 11. PENALTIES, PROTESTS AND REQUESTS FOR REDRESS

---

- 11.1. Protest forms are available on the Notice Board located on the white cupboards in the club room. Protests and requests for redress or reopening shall be delivered to the Registration official within the appropriate time limit.
- 11.2. For each class, the protest time limit is 60 minutes after the last boat has finished the last race of the day or the race committee signals no more racing today, whichever is later.
- 11.3. Immediately after finishing a boat intending to protest shall, in addition to the requirements of RRS61.1(a), inform the Race committee at the finishing line of her intention to protest and the identity of the boat(s) protested against. The protesting boat must receive an acknowledgement from the [race committee] [protest committee]. This changes RRS 61.

- 11.4. Notices of protests by the race committee, technical committee or protest committee will be posted to inform boats under RRS 61.1(b).
- 11.5. On the last scheduled day of racing a request for redress based on a protest committee decision shall be delivered within the protest time limit if the requesting party was informed of the decision on the previous day; This changes RRS62.2

## **12. SCORING**

---

- 12.1. For the InterSchools Regatta three races are required to be completed to constitute a series.
- 12.2. (a) When five or fewer races have been completed, a boat's series score will be the total of her race scores.
- (b) When from six or more races have been completed, a boat's series score will be the total of her race scores excluding her worst score.
- 12.3. To request the correction of an alleged error in posted race or series results, a boat shall complete a Scoring Enquiry Form available at the race office.

## **13. SCORING OF SCHOOLS TEAMS**

---

- 13.1. The scoring of the Schools Teams is outlined in Attachment C

## **14. SAFETY REGULATIONS**

---

- 14.1. All boats intending to race shall complete the sign on sheet prior to going afloat for any races.
- 14.2. On returning to shore, all boats shall complete the sign off sheet.
- 14.3. A boat that retires from a race or returns to the launching area before she has finished the last race of the day shall notify the Race Committee as soon as possible.
- 14.4. Competitors who require assistance shall blow a whistle or wave the paddle or one arm. The Race Committee reserves the right to assist competitors who in their opinion require assistance, regardless of the wishes of the competitor. This will not be grounds for redress. This changes rule 62.1(a), *Redress*.

## **15. REPLACEMENT OF CREW OR EQUIPMENT**

---

- 15.1. Substitution of competitors will not be allowed. The person on-board shall be the person named on the entry form.
- 15.2. Substitution of damaged or lost equipment will not be allowed unless authorised by the Race Committee. Requests for substitution shall be made to the committee at the first reasonable opportunity.
- 15.3. Change of sail numbers will not be allowed without prior approval of the Race Committee.

## **16. EQUIPMENT INSPECTION**

---

- 16.1. A boat or equipment may be inspected at any time for compliance with the class rules and sailing instructions. On the water, a boat may be instructed by a Race Committee or representative to proceed immediately to a designated area for inspection.

## **17. OFFICIAL BOATS**

---

- 17.1. Media boat will be identified with a M flag.

## **18. SUPPORT BOATS**

---

- 18.1. Except when requested to participate in rescue operations, team leaders, coaches, parents and other support personnel shall stay outside areas where boats are racing and are restricted to a 5 knot speed limit, from the time of the preparatory signal for the first fleet of a race to start until all boats have finished or the Race Committee signals a postponement or abandonment of all fleets. The areas the boats are racing in is defined as the area inside the course and within 100 metres of any mark, lay line, starting line, finishing line or any area where any boat that is racing is sailing or may sail. During any starting sequence, support boats in the vicinity of the start line, shall stay at least 50 meters below the starting line and its extensions.

- 18.2. All occupants of support boats under 5.6 metres shall wear an appropriate size personal flotation devices (PFD) at all times while afloat, except briefly while changing or adjusting clothing or personal equipment. Each PFD shall comply with Maritime Rules Part 91, Navigation Safety Rules, wetsuits and drysuits are not PFDs. For support boats 5.6 metres or longer the Maritime Rules require the boat carry sufficient personal flotation devices of an appropriate size for each person on board and in a readily accessible location.
- 18.3. All support boat drivers shall have the outboard kill cord attached to themselves.
- 18.4. When a Race Committee or Protest Committee member indicates a support boat to move further from the course area, the mentioned boat shall do so immediately.
- 18.5. The Protest Committee or the Race Committee may instruct one or more support boats to maintain station in areas which are at variation from Sailing Instruction 24.1.
- 18.6. When the wind is less than 10 knots support boats shall not exceed 5 knots within 500m of the area where boats are racing.
- 18.7. When flag W (with a long sound signal) is displayed on a committee boat all support boats are requested to remain afloat and assist all sailors.
- 18.8. The Race Committee or the Protest Committee may protest any boat whose support boat is in breach of Sailing Instruction 24. Penalties imposed as a result of a protest under this rule will result in a penalty being imposed on the boat(s) supported by the support boat.
- 18.9. Support boats shall be registered with the organizing authority in accordance with the Notice of Race. All support boats must complete the registration sheet at the safety briefing Saturday 12<sup>th</sup> March and be contactable on VHF radio.

---

## **19. RUBBISH DISPOSAL**

- 19.1. Rubbish may be placed aboard support and Race Committee boats.

---

## **20. LAUNCHING AND RETRIEVAL RESTRICTIONS**

- 20.1. All boats will be required to launch and retrieve from beach/ramp adjacent to the yacht club except with and according to the terms of prior written permission of the Race Committee.

---

## **21. RADIO COMMUNICATION**

- 21.1. Except in an emergency, a boat shall neither make radio transmissions while racing nor receive radio communications not available to all boats. This restriction also applies to mobile telephones.

---

## **22. PRIZES**

- 22.1. The age limit for medals is under 19 as of December 31st 2020**

---

## **23. DISCLAIMER OF LIABILITY**

- 23.1. Competitors participate in the regatta entirely at their own risk. See rule 4, *Decision to Race*. The Organising Authority and its agents (specifically including the personnel of the Organising Authority) together with other parties involved in the Regatta accept no responsibility or liability whatsoever for any loss, damage, injury or death which may occur to any person or property, whether ashore or afloat, as a consequence of participation in the Regatta or otherwise.

# Course Illustration

## IW

### IWa

Signal Mark Rounding Order **IW**

IW1 Start - 1 - 2 - 3p - 5 - Finish **IW**

IW2 Start - 1 - 4s/4p - 1 - 2 - 3p - 5 - Finish **IW**

IW3 Start - 1 - 4s/4p - 1 - 4s/4p - 1 - 2 - 3p - 5 - Finish **IW**

Signal Mark Rounding Order **IWa**

IWa 1 Start - 1a - 4s/4p - 1a - 4s/4p - Finish **IWa**

IWa 2 Start - 1a - 4s/4p - 1a - 4s/4p - 1a - 4s/4p - Finish **IWa**

## OW

**Course: Outer Trapezoid with beat to**

Signal Mark Rounding Order

OW2 Start - 1 - 2 - 3s/3p - 2 - 3p - 5 - Finish

OW3 Start - 1 - 2 - 3s/3p - 2 - 3s/3p - 2 - 3p - 5 - Finish

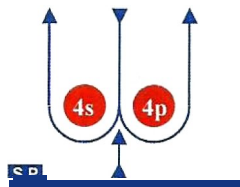
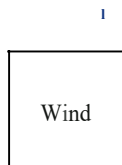
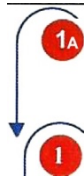
OW4 Start - 1 - 2 - 3s/3p - 2 - 3s/3p - 2 - 3s/3p - 2 - 3p - 5 - Finish

Mark	Description
	Orange Cylinders
	Orange Cylinders
	Yellow Cylinders
	Yellow Cylinders
	Yellow Cylinders
	Yellow Cylinders
	Yellow Cylinder
	Starting mark starboard end
	Starting mark port end
	Finishing mark starboard end
	Finishing mark port end
	Yellow Cone Cylinder
	Change of Course Mark - Conical fluoro green
	Orange Tear Drop
	Boat ZEST
	Starting Pin - Floating Orange Flag
	Boat ZEST
	Orange Tear Drop



## Course Illustrations - Windward Leeward

**L**



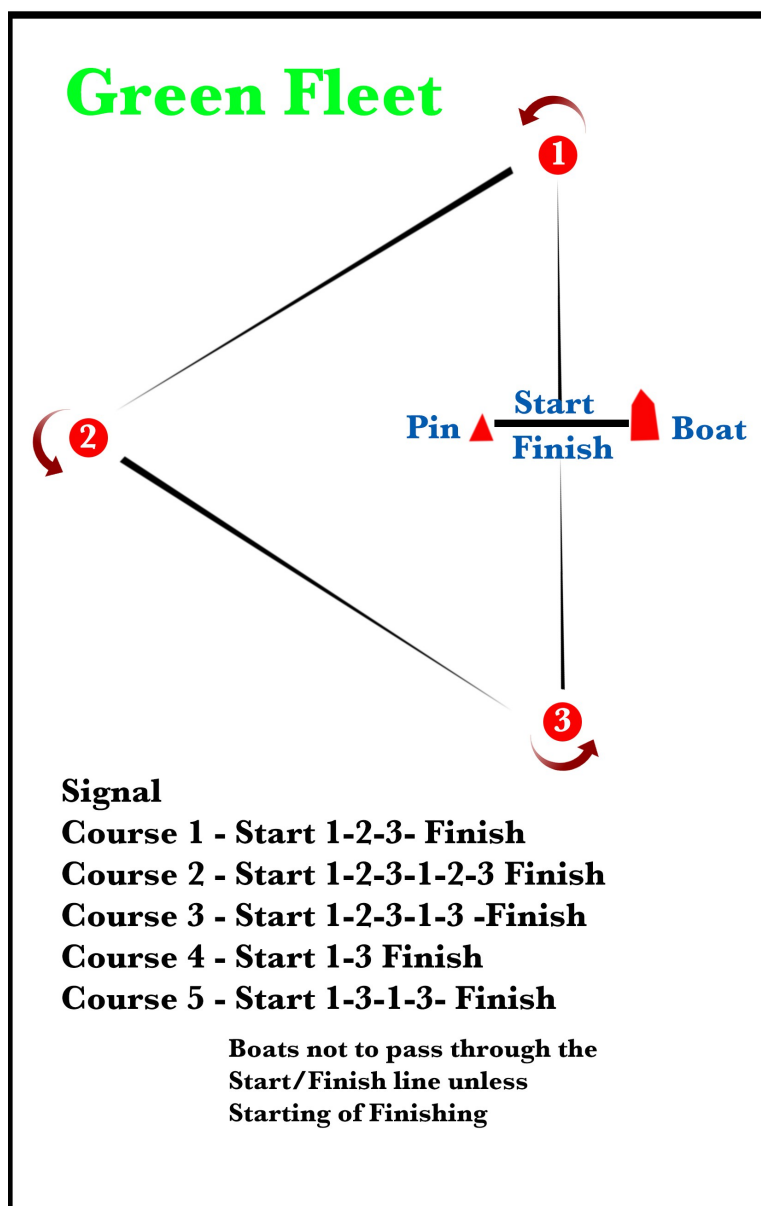
### Course: Leeward finish

Signal	Mark Rounding Order
<b>L2</b>	Start -1- 4s/4p - 1- Finish
<b>L3</b>	Start-1-4s/4p -1-4s/4p - 1- Finish
<b>L4</b>	Start -1- 4s/4p -1- 4s/4p - 1- 4s/4p -1 - Finish

Mark	Description
<b>0</b>	Yellow Cylinder
<b>0</b>	Orange Triangle
<b>4s 4p</b>	Yellow Cylinders
<b>D3</b> Starting mark starboard end	"Zest" Yacht
<b>II</b> Starting mark port end	Orange Tear<lr>rop
<b>111</b> Finishing mark starboard end	Orange Teardrop
<b>II</b> Finishing mark port end	"Zest" Yacht

## Attachment A

### Course A



## Attachment C

### Scoring of School Teams (Sailing Instruction 18.1)

The results of 1st 2nd and 3rd places will be used to calculate the winning School. The age limit for medals is under 19 as of December 31st 2020. Five boats must be in the fleet.

# ATTACHMENT D RACING AREA and Parking

